



Developing a mining giant

Deon Garbers, Mining Expo, 22 May 2013

缔造矿业巨人 迪昂·佳博士 矿业博览会，5月22日

Content of presentation

- ◆ Health Safety Environment performance
- ◆ Historical milestones
- ◆ Husab mine in a nutshell
- ◆ Regional map
- ◆ Off-site infrastructure
- ◆ Mine site layout
- ◆ Project milestones and timelines
- ◆ Pictures from site activities
- ◆ Operational equipment
- ◆ Husab's contribution to the economy
- ◆ Corporate social involvement



Safety performance: Apr 13

Project Progress to date:	23%
Total number Employees:	651
Total man hours overall to date:	277,633
Total Inductions presented to date:	750
Fatal Incident Frequency Rate:	0
Lost Time Injury Frequency Rate:	0
Lost Time Injury Severity Rate	0
MTC Frequency Rate (MTCFR):	3.6

1x MTC: Contractor employee bitten by snake



Historical milestones

- ◆ April 2006: Drilling started on Ida Dome
- ◆ February 2008: Discovery of Husab was announced
- ◆ April 2009: Feasibility Study of the project commenced
- ◆ June 2010: First blast took place on the Husab site
- ◆ January 2011: EIA study approved
- ◆ April 2011: Feasibility study completed
- ◆ 30 November 2011: Mining License ML171 was awarded by the Ministry of Mines and Energy
- ◆ April 2012: CGNPC and CAD Fund through Taurus became 100% shareholder of Swakop Uranium
- ◆ November 2012: Epangelo obtained a 10% stake in Swakop Uranium
- ◆ 18 October 2012: Authority to Proceed (ATP) was granted to start the Husab project



Husab mine in a nutshell

◆ Geology

- ◆ Mining reserve of 331 M lb uranium oxide
- ◆ 21-year life of mine for zones 1 & 2

◆ Project

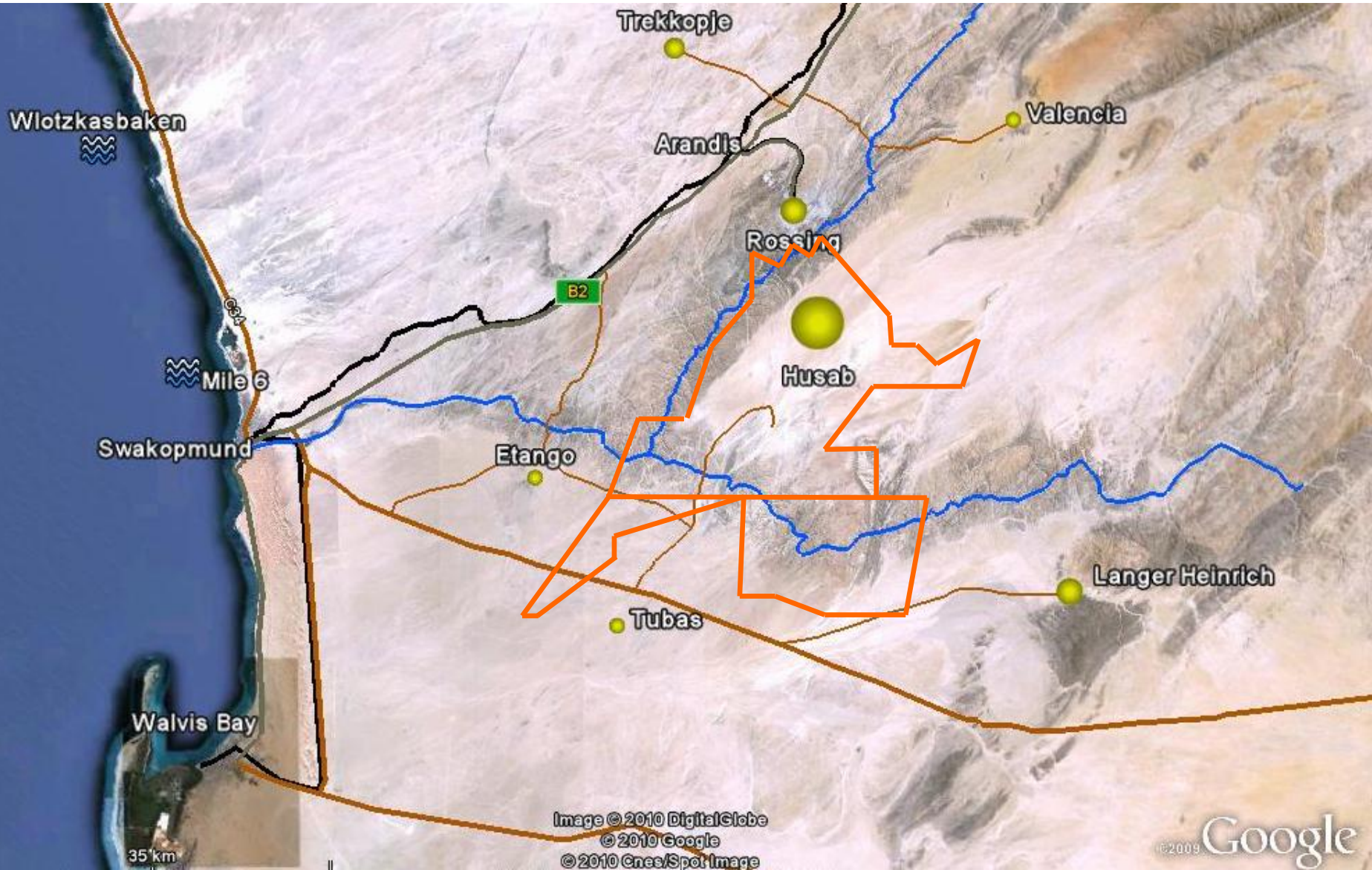
- ◆ Estimated capital & development cost N\$20-billion
- ◆ 34 months from go-ahead to hot commissioning
- ◆ Contracts issued to date total N\$4,4bn
- ◆ 40% of value of contracts issued to Namibian registered companies
- ◆ Project 23% completed @ end April 2013
- ◆ Project within budget and on schedule to date

◆ Production

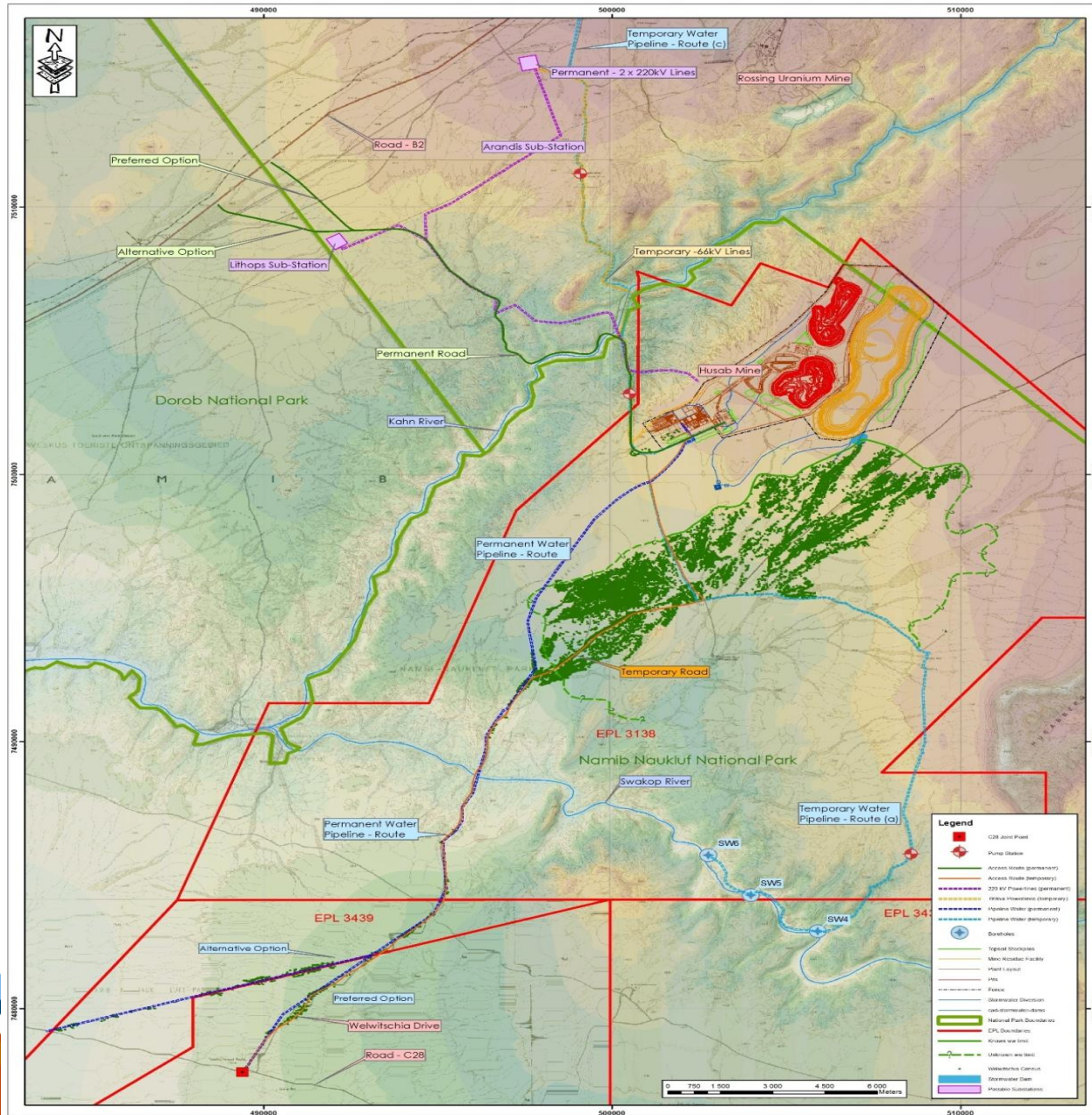
- ◆ 150 M mining tons handled per year
- ◆ Production of 15 M lb uranium oxide per annum
- ◆ Namibian Government, through Epangelo Mining, owns 10% of Husab mine



Regional map



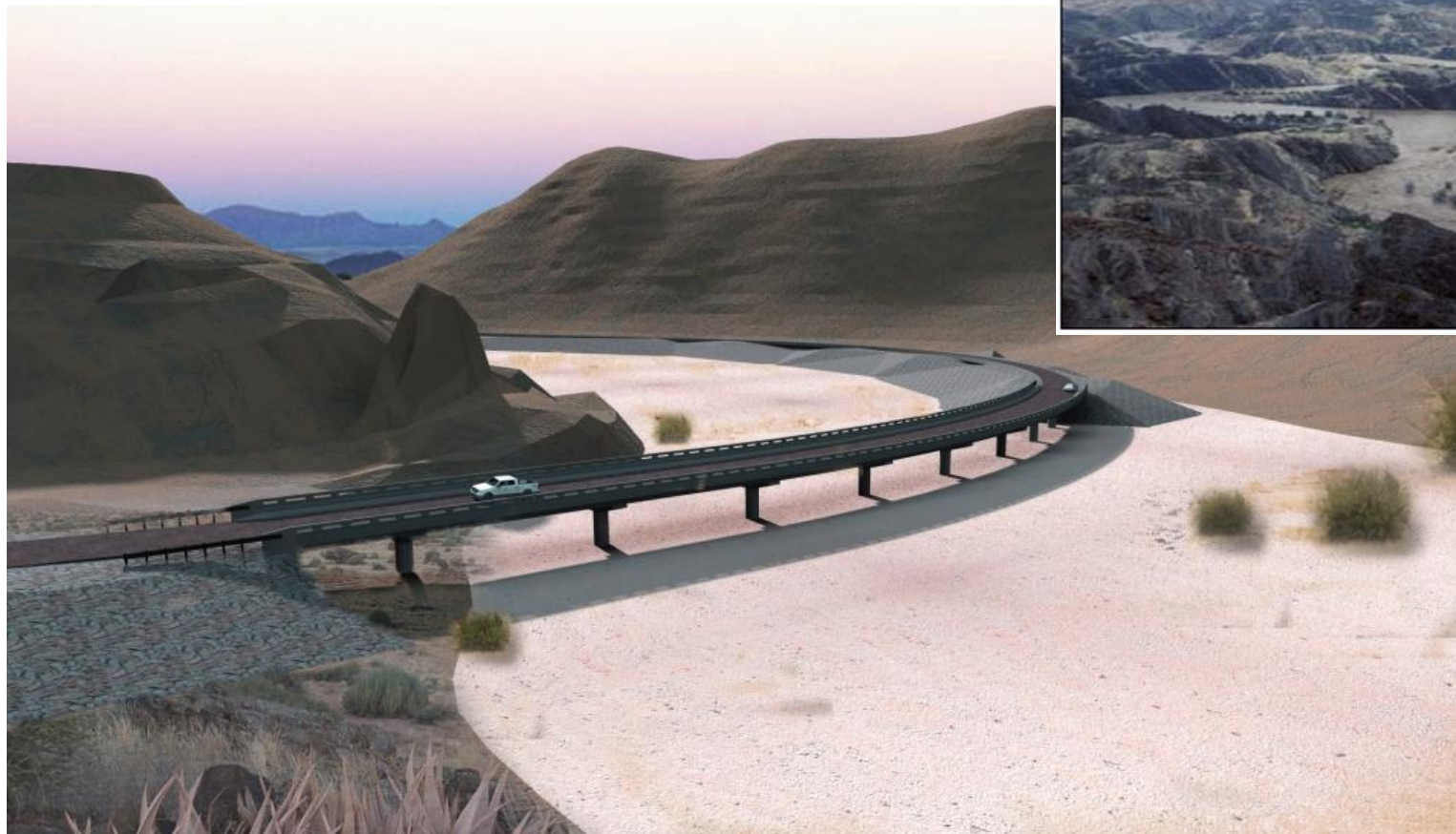
Project site location



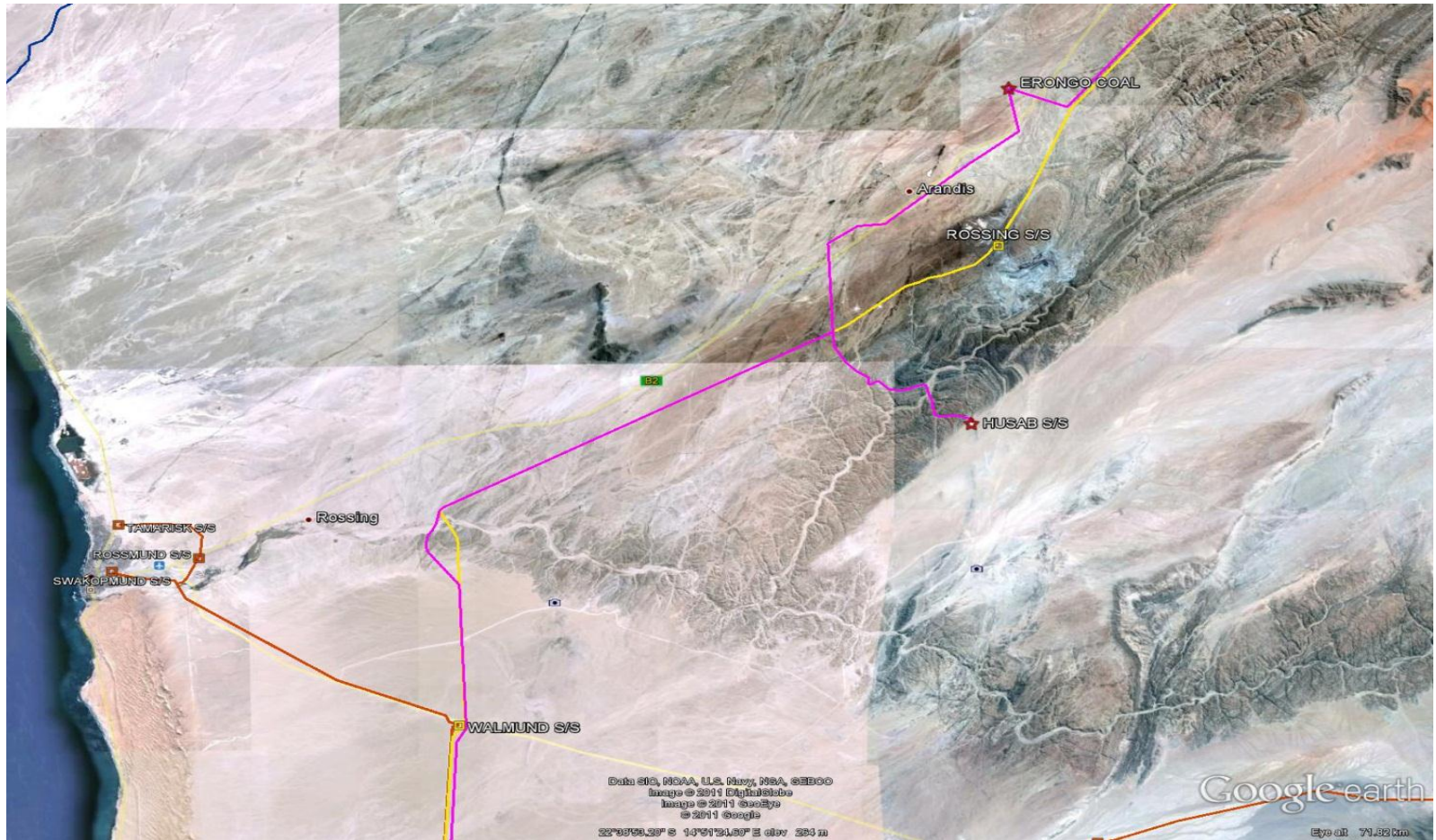
Permanent access route



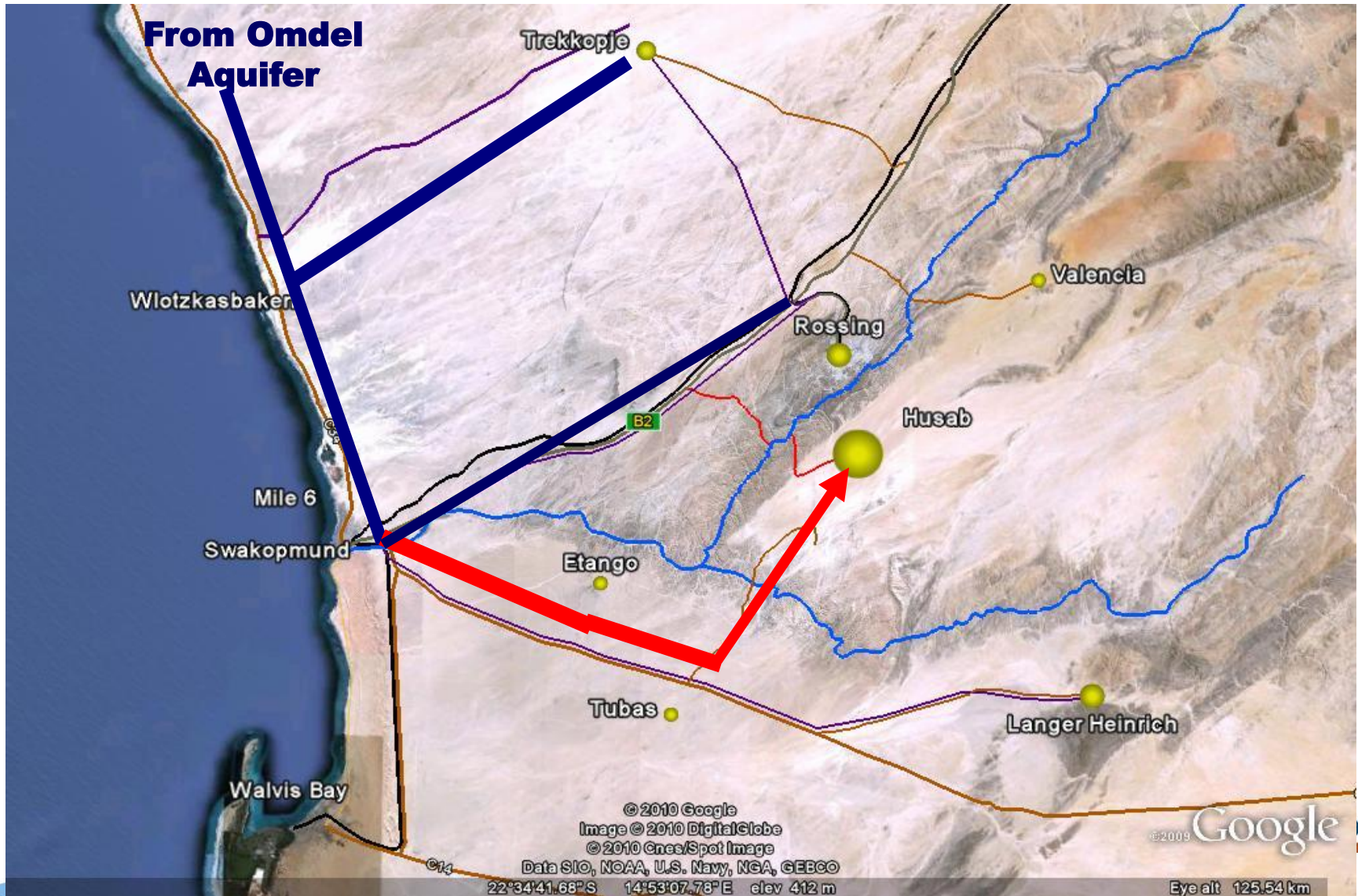
Bridge over the Khan river



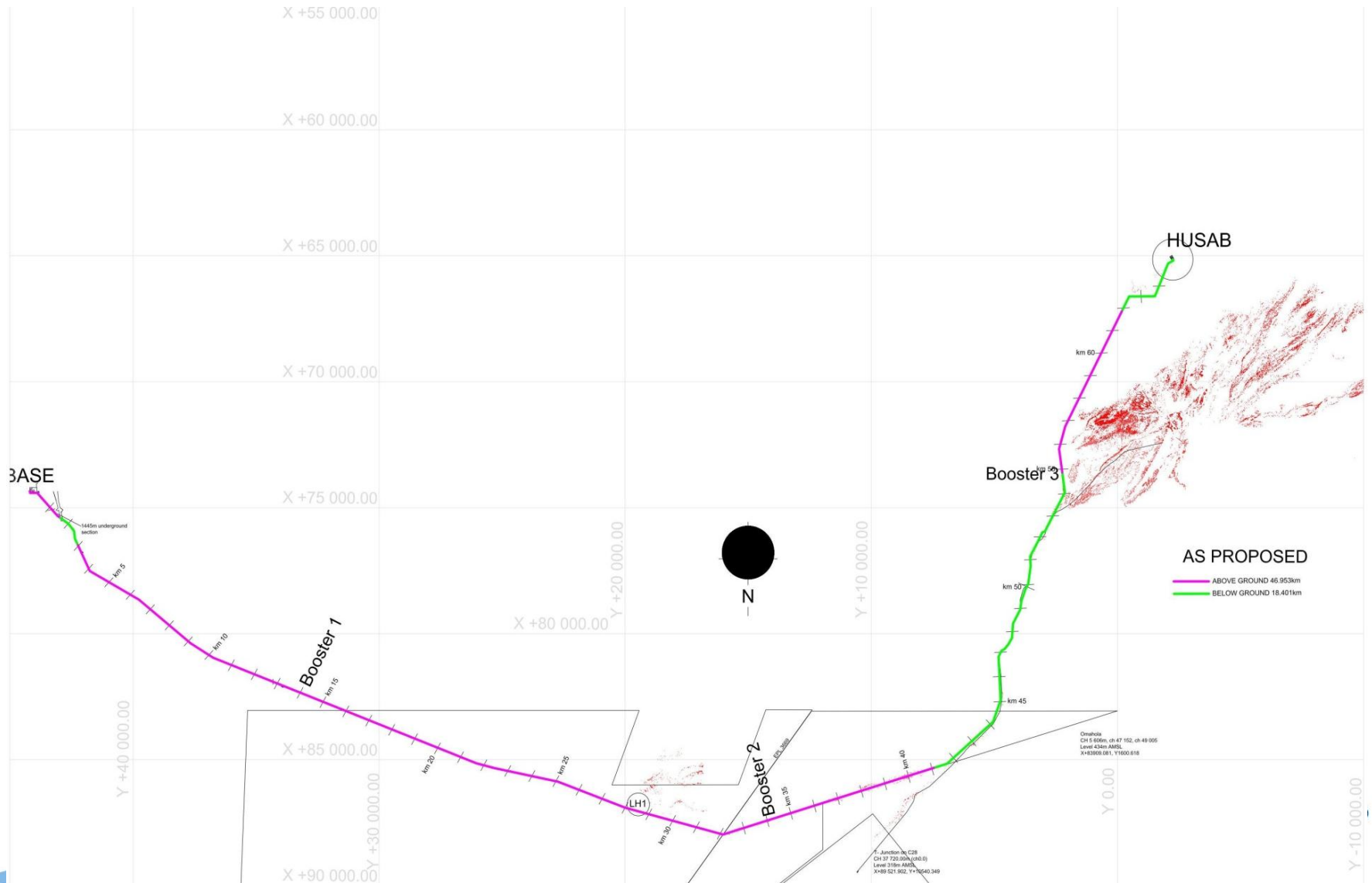
Permanent power supply route



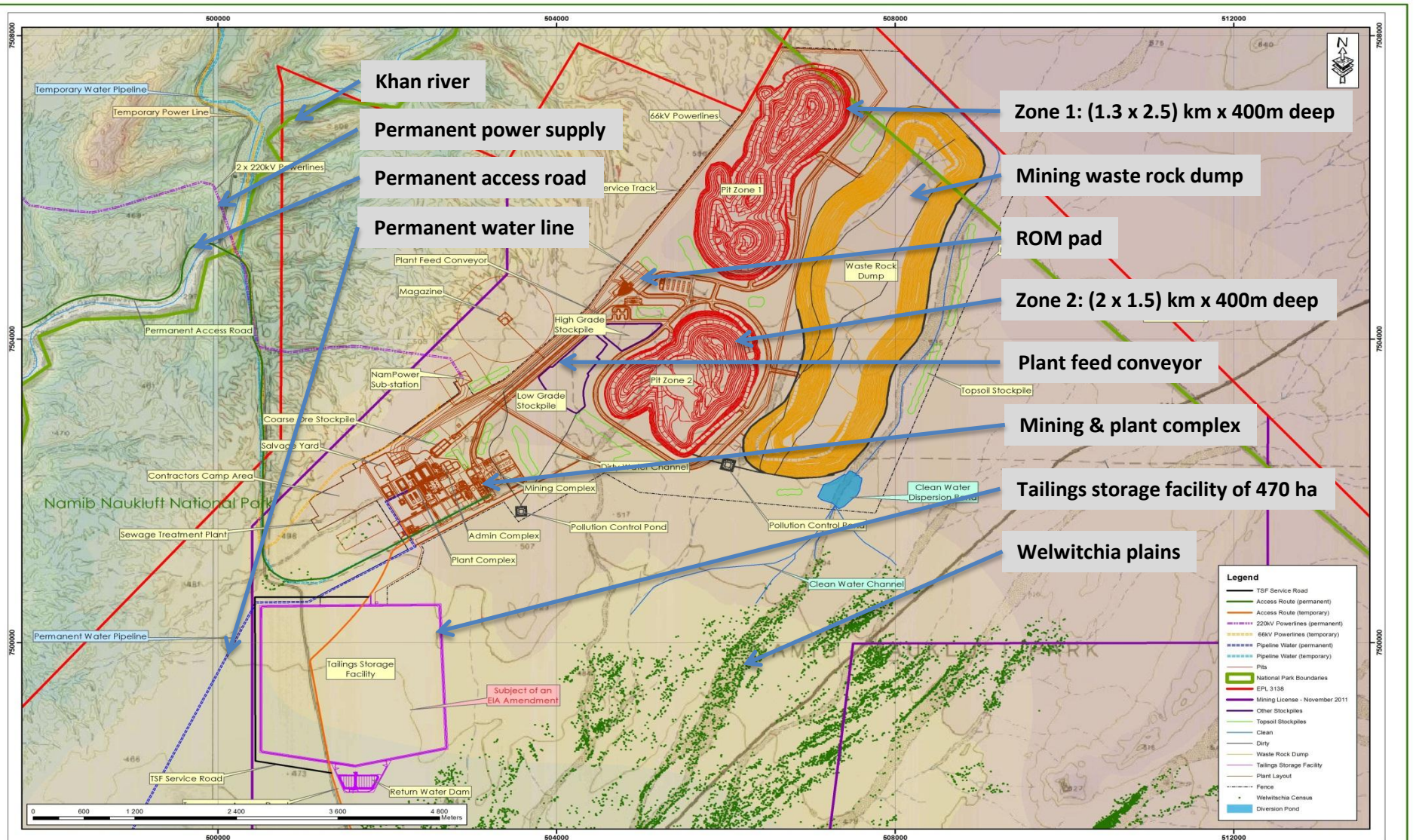
Permanent water supply



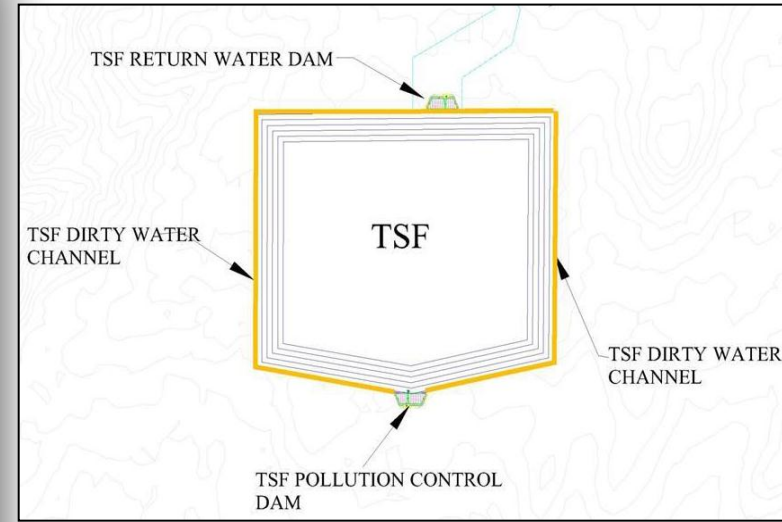
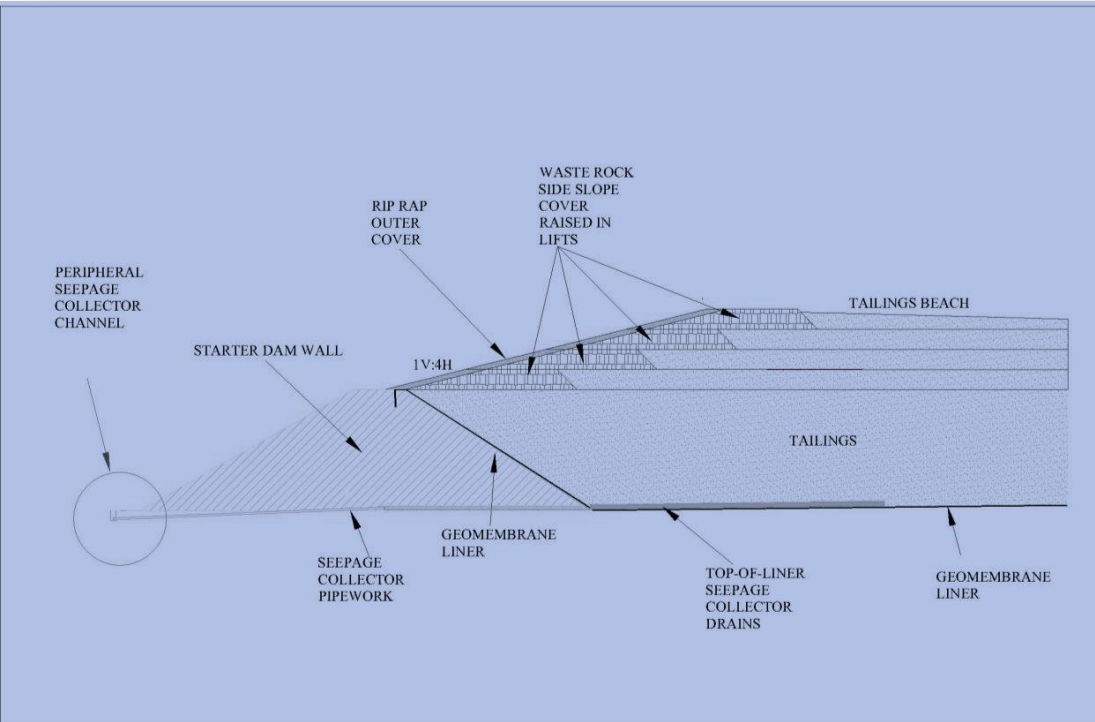
Permanent water supply design



Mine site layout



Tailings storage facility designs



Plan view

Section view

View @ mine closure & after rehabilitation



Project milestones and timelines



Milestone	Expected dates
Arrival of mining equipment on site	3 rd quarter 2013
Commencement of pre stripping	2 nd quarter 2014
Availability of permanent power and water	2 nd quarter 2015
Completion of process plant and associated amenities	3 rd quarter 2015
Overall hot commissioning	4 th quarter 2015

Pictures from site



Meaning of Husab: Hole in the ground



Husab mountain



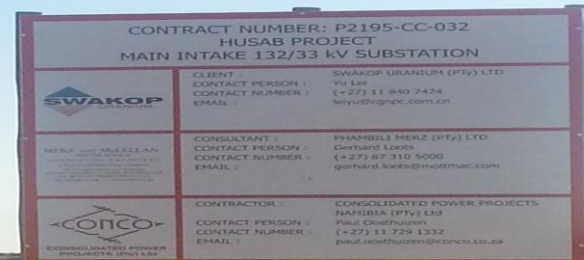
On-site offices



Temporary pipeline and pond

Pictures from site

Bulk earth works: feed conveyor: 3 km



**Bulk earth works completed for main in-take sub station
Total power need: 130 MW**



Khan bridge piling in progress

Main access road from B1: 22 km



Massive equipment for a huge mine



In total 39 units @ 330 tons payload each will handle 150 million mining tons per year



Husab's contribution to the economy

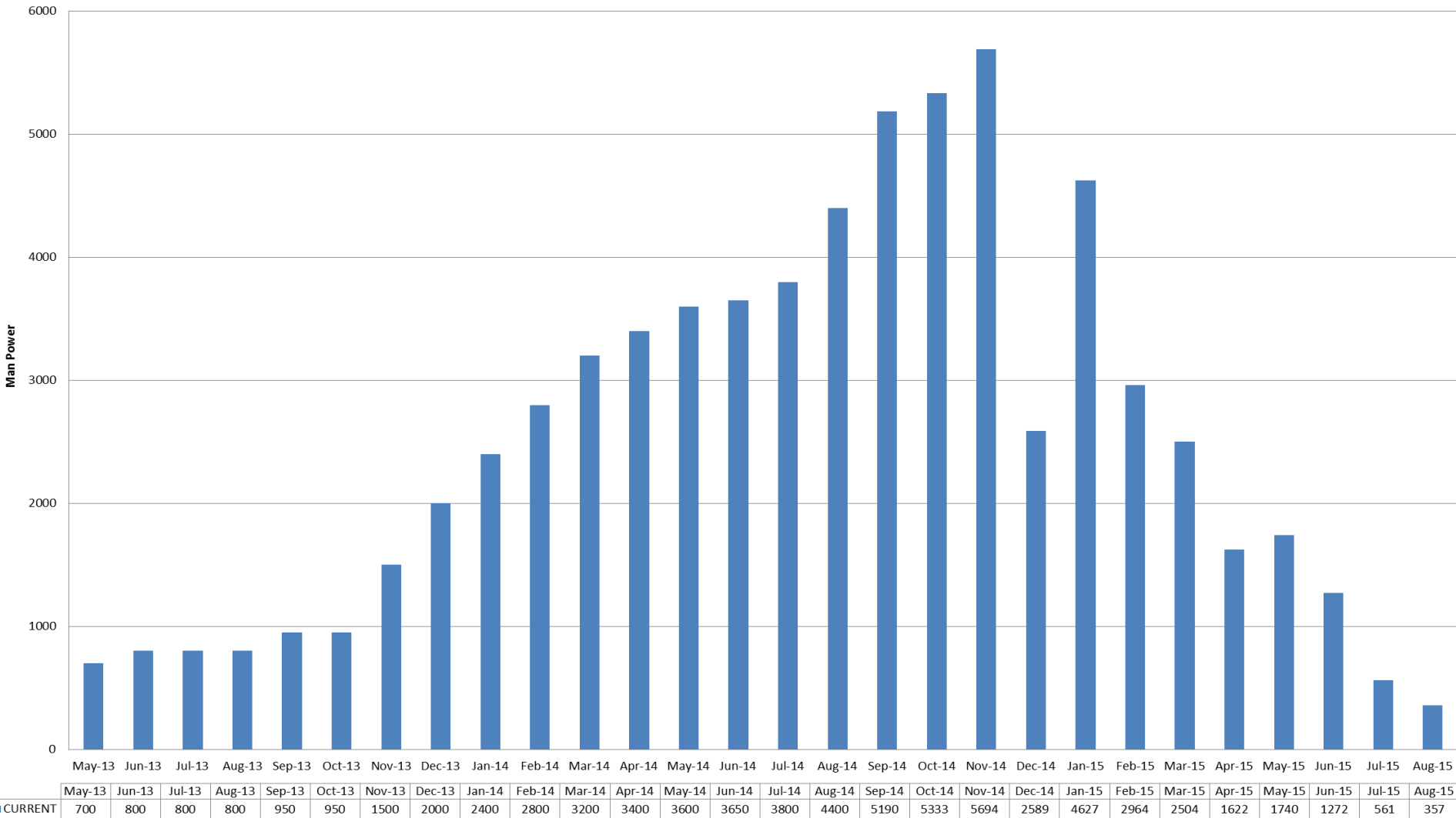
- Expected to contribute 5-6% of total government income
- N\$1.1 - 1.7 billion per year in corporate tax
- N\$220-million per year in royalty payments
- Employee PAYE, duties, withholding and other taxes
- Create 2 000 permanent employment opportunities (including contractors) and
- + 8 000 temporary jobs during construction
- Create a further 8 000 indirect jobs in Namibia
- Increase the number of people employed in the mining sector by 17%
- Contribute an additional N\$7.3bn to Namibian exports (2011 exports N\$33.8bn)



Project resourcing

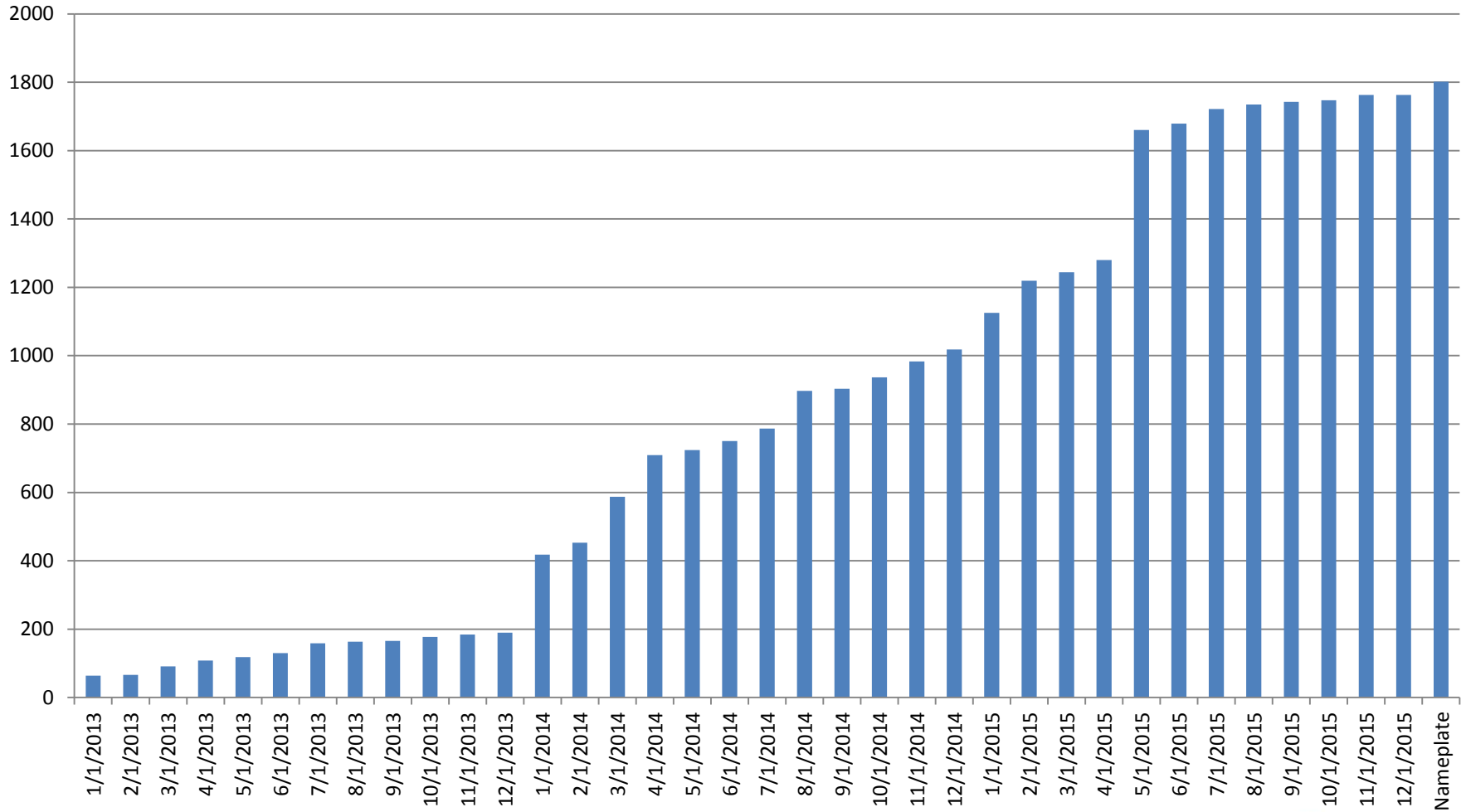
Husab Joint Venture Project
As at 21May13

Rev2 Proposed Baseline Camp Loading Man-power Histogram (Work in Progress)



■ CURRENT

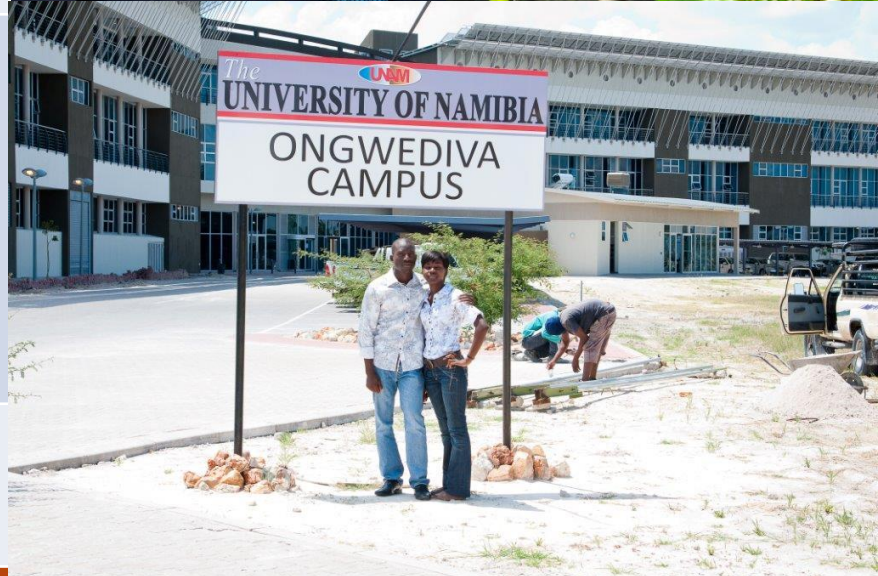
Operations resourcing



Corporate social involvement

4 pillars of corporate social involvement

Education and skills development	<ul style="list-style-type: none">• Graduation scheme• Assistance in schooling infrastructure• International training
Employment creation and poverty alleviation	<ul style="list-style-type: none">• Local procurement• SME support and development• Employment of Namibians
Sound environmental management	<ul style="list-style-type: none">• Health and radiation• Environment• Air quality• Water• SEMP principles• Ecological integrity
Community support	<ul style="list-style-type: none">• Alleviation of human suffering





Thank you